



III Semester B.Com. Examination, Nov./Dec. 2017
(CBCS) (Freshers + Repeaters) (2015-16 and Onwards)
LANGUAGE ENGLISH – III

Time : 3 Hours

Max. Marks : 70

- Instructions :** 1) Answer *all* questions.
2) Write the correct questions **number**.

SECTION – A

(Course Book)

- I. Answer **any five** of the following in **one** or **two** sentences **each** : **(5×2=10)**
- 1) What was the problem faced by Monsieur Seguin with his little goat ?
 - 2) What made Mrs. and Mr. Shyamnath anxious about the dinner ?
 - 3) Where did Gandhari lead Dhritharashtra at the end of the story ?
 - 4) What made the writer unhappy after the dinner in the story 'The Night I met Einstein' ?
 - 5) Why did Karlie sit on the 'European's only' bench ?
 - 6) In what respect Hitler's dictatorship is different according to Albert Speer, Hitler's minister for armament ?
 - 7) Mention any two rights that are included in the Right to Information Act.
- II. Answer **any four** in about **80** to **100** words : **(4×5=20)**
- 1) Describe the great fight of Monsieur Seguin's goat with the wolf all through the night.

P.T.O.



- 2) Briefly explain how Mr. Shyamanath put his mother into great discomfort in the lesson 'Dinner for the Boss'.
- 3) Explain as to why Gandhari preferred to blindfold her eyes in the story 'Gandhari'.
- 4) Describe how Einstein taught the young writer to appreciate music.
- 5) How does the bench with "Europeans only" symbolize the misery of the Blacks in African society ?
- 6) How is Theory X different from Theory Z with reference to the attitude of employees in the poem 'Managing the Common Herd' ?

III. Answer **any two** of the following in **a page and a half each** : **(2×10=20)**

- 1) "The little goat had all the opportunity to avoid its fight with the wolf, yet it decides to fight". What aspect of its personality is shown here ? Discuss.
- 2) The story 'The Bench' is a depiction of the Blacks' fight for their rights against the White. Discuss with reference to Karlie's fight for his rights.
- 3) Comment on the indifferent attitude of employees described in the poem, "Managing the Common Herd".

SECTION – B

(Workbook)

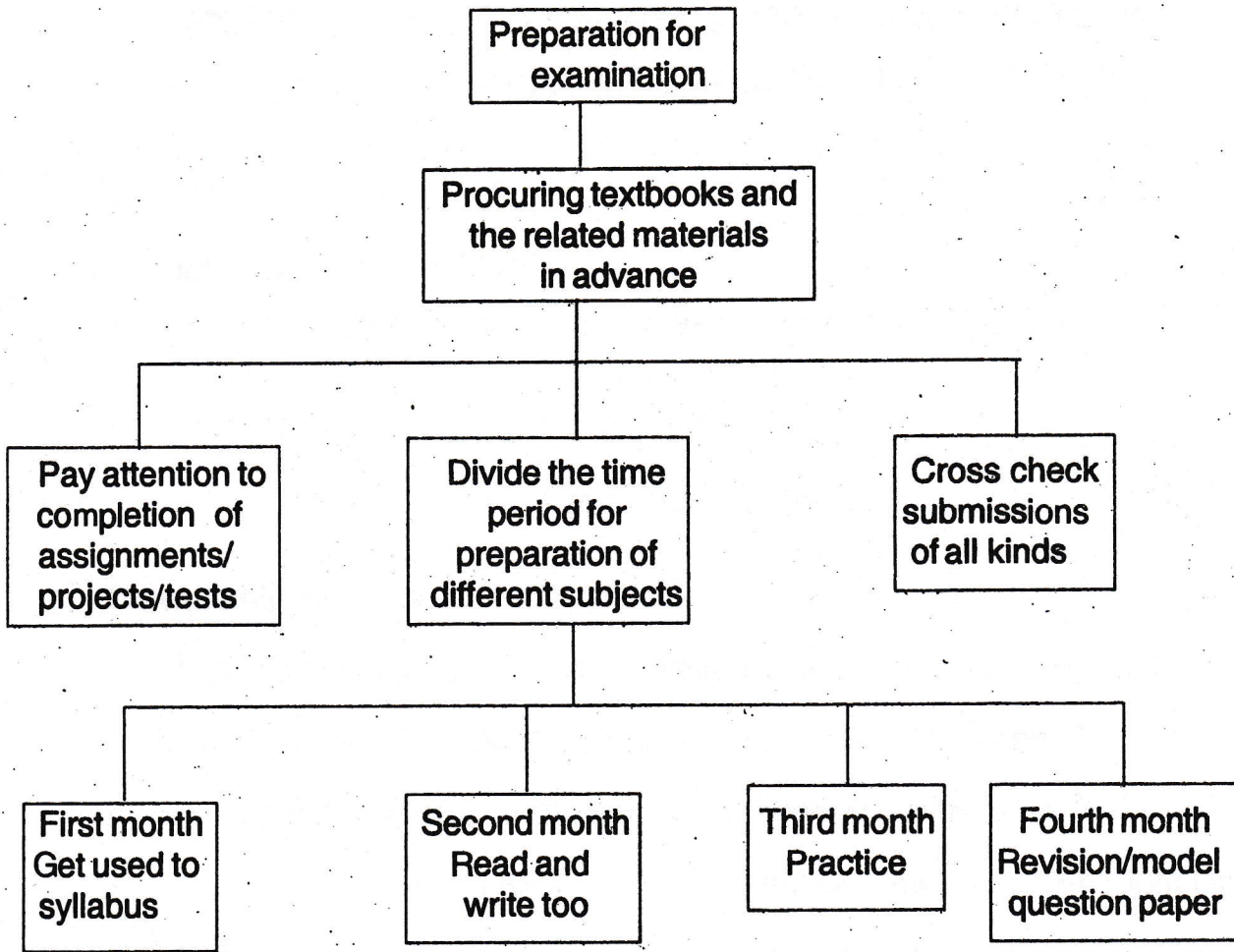
IV. In the present scenario using an Eco-friendly Ganesha Idol is a necessity. Write a report on how such awareness is brought in your place. **10**

Hints – Spread news across through media – harm due to synthetic paints – affecting water bodies – avoid the preparation of large idols.



V. Develop a narrative using the tree diagram given below using suitable cohesive devices.

5



VI. The recent heavy rains has affected the power supply in your city. Write a letter to the local corporation authorities demanding immediate action using following hints.

5

- Overflow of drainage.
 - Examination time.
 - Closure of roads.
 - Provision of temporary relief.
-